

# M 80

Gerätesteckdose der  
Schutzklasse II  
*appliance connector for safety class II*

Zweipolig ohne Schutzkontakt,  
Kabeleinführung links  
*2-pole plug without earthing-contact,  
cable entry left*

EN 60320-1:1996+A1:98 C17,  
10 A, 250 V~



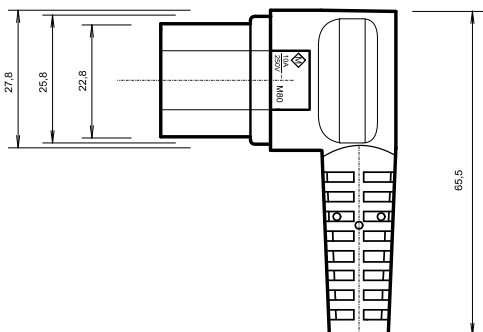
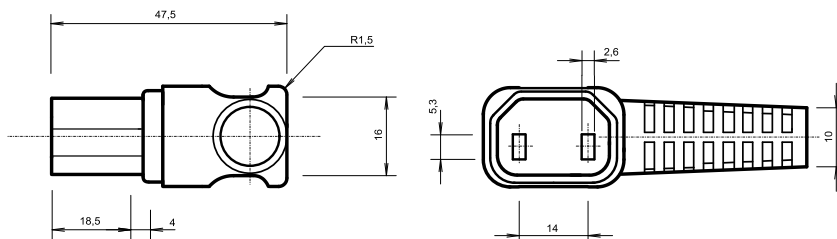
## PASSENDE ANSCHLUSSLEITUNGEN

*suitable flexible cord types*

H05VV-F	2 X 0,75
H05VV-F	2 X 1,00
H05VV-F	2 X 1,50
H05RR-F	2 X 0,75
H05RR-F	2 X 1,00
H05RN-F	2 X 0,75
H05RN-F	2 X 1,00
H07RN-F	2 X 1,00
H07RN-F	2 X 1,50

## TECHNISCHE ZEICHNUNG

*technical drawing*



## APPROBATIONEN

*approvals*

EUROPA  
Europe

