

M 81

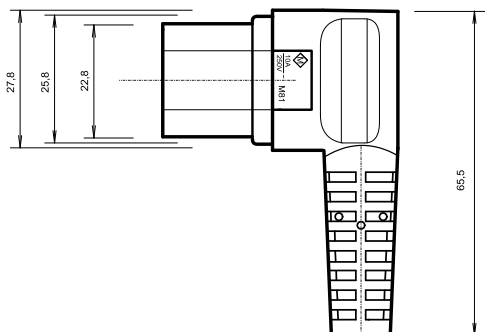
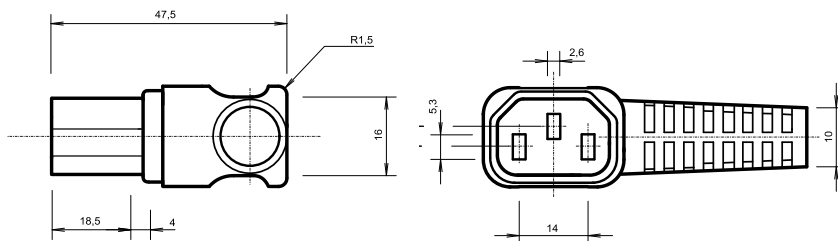
Gerätesteckdose der
Schutzklasse I
appliance connector for safety class I

Zweipolig mit Schutzkontakt,
Kabeleinführung links
*2-pole plug without earthing-contact,
cable entry left*

EN 60320-1:2001 C13, 10 A, 250 V~



TECHNISCHE ZEICHNUNG *technical drawing*



PASSENDE ANSCHLUSSLEITUNGEN *suitable flexible cord types*

H05VV-F	3 G 0,75
H05VV-F	3 G 1,00
H05VV-F	3 G 1,50
H05RR-F	3 G 0,75
H05RR-F	3 G 1,00
H05RR-F	3 G 1,50
H05RN-F	3 G 0,75
H05RN-F	3 G 1,00
H07RN-F	3 G 1,00

APPROBATIONEN *approvals*

EUROPA
Europe

